

# KANDO 130 XL

AvA Yachts



## SPECIFICATION

Location:	TURKEY
Yacht type:	MOTOR
Length:	128' 3" ( 39.1 Meters)
Beam:	27' 11" ( 8.5 Meters)
Draft:	8' 10" ( 2.70 Meters)
Engines:	2x 750hp VOLVO PENTA D16MH
Number of cabins:	6
Number of guests:	12
Number of crew:	7

## KEY FEATURES

- Steel hull and aluminum superstructure
- Range of 7000 nautical miles at 10-11 knot
- Enhanced safety with 8-10mm underwater steel thickness and multiple watertight bulkheads

# KANDO 130 XL

AvA Yachts

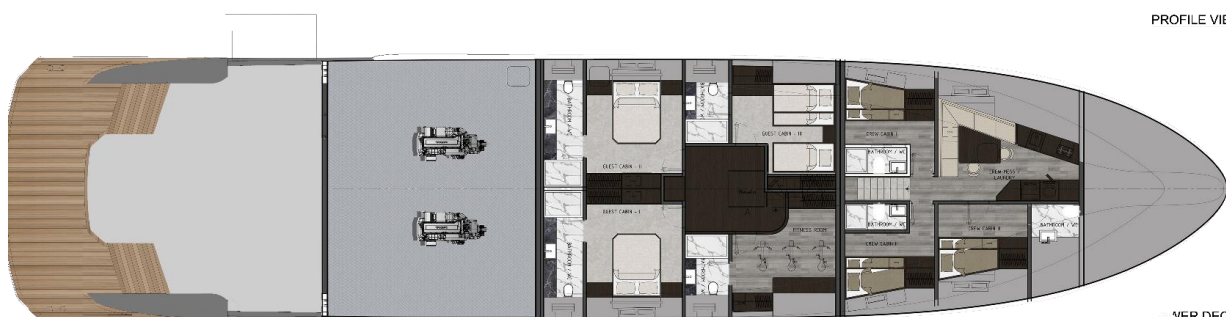
GA OPT-1



AvA Yachts



PROFILE VIEW



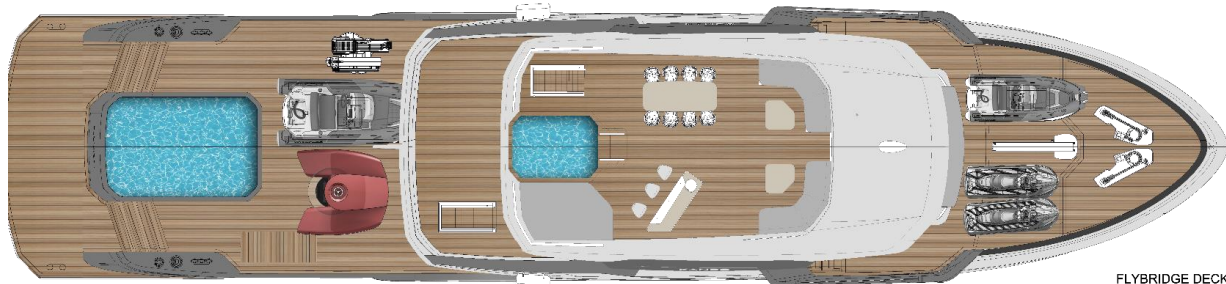
LOWER DECK



MAIN DECK



UPPER DECK



FLYBRIDGE DECK

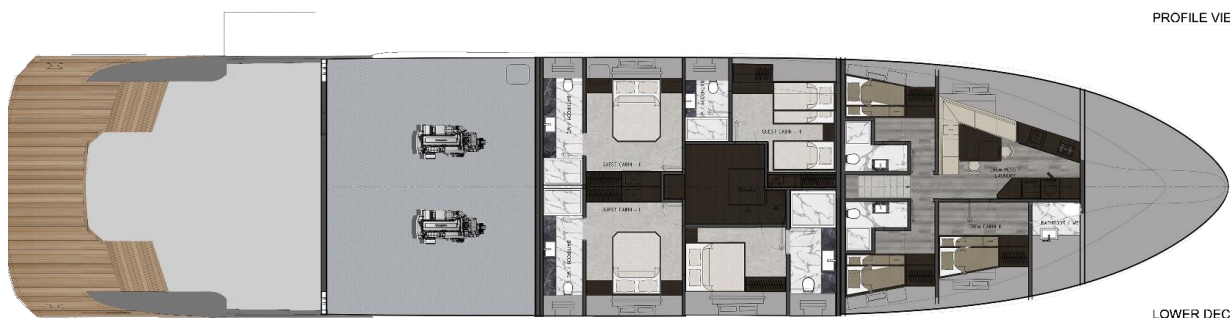
# KANDO 130 XL

AvA Yachts

GA OPT-2



PROFILE VIEW



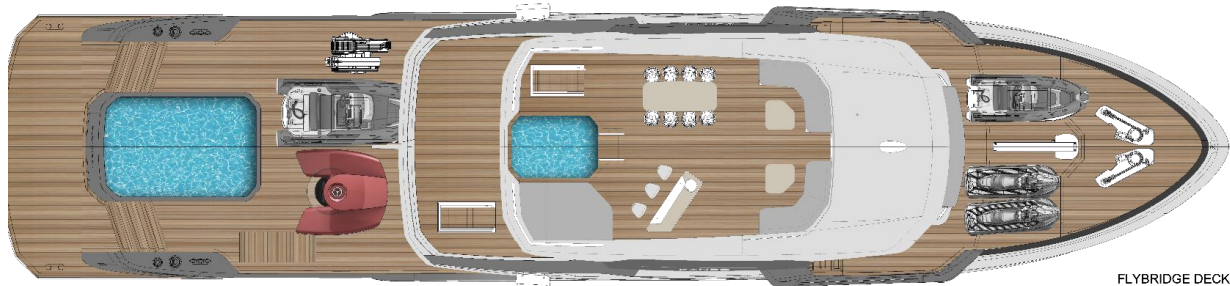
LOWER DECK



MAIN DECK



UPPER DECK



FLYBRIDGE DECK

# KANDO 130 XL

AvA Yachts



AvA Yachts



# KANDO 130 XL

AvA Yachts



AvA Yachts



# KANDO 130 XL

AvA Yachts



# KANDO 130 XL

AvA Yachts



AvA Yachts



# KANDO 130 XL

AvA Yachts



AvA Yachts





# KANDO 130 XL

AvA Yachts



# KANDO 130 XL

AvA Yachts



# KANDO 130 XL

AvA Yachts





AvA Yachts

[sales@avayachts.com](mailto:sales@avayachts.com)  
[avayachts.com](http://avayachts.com)

**CONFIDENTIAL**

This document includes confidential proprietary data belonging to AvA Yachts, and all rights regarding the same are expressly reserved. It is submitted under a confidential relationship for the specific purpose of evaluating the construction of the referenced Yacht by the Client. The Client and the Client's advisers, by accepting this document, assume custody and control and agree that it will not be reproduced in whole or in part, nor its contents revealed in any manner or to any person except to meet the purpose for which it was intended and subject to the relevant confidentiality warnings.